



Devonshire Place

Melksham SN12 7DP

- Three spacious bedrooms
- Flexible reception room
- Downstairs toilet and bathroom
- Schools, parks, shops nearby
- Terraced house in Melksham
- End of chain opportunity
- Kitchen/diner and living room
- Ideal for young families
- Bus stop within walking distance
- Viewing highly recommended

£235,000 Freehold





Porch

External door, window to front and side elevations and door to hall.

Hall

Open to living room, stairs to first floor with understairs storage, doors to kitchen, WC and folding door to reception room, storage cupboard and external door to garden.

Living Room

12'1" x 15'1"

Window to front elevation and radiator.

Kitchen/Diner

11'5" x 12'11"

Fitted with a matching range of base and eye level units, 1+1/2 bowl sink, space for washing machine, dish washer, fridge/freezer and cooker. Two windows to rear elevation and boiler cupboard.

WC

Fitted with two piece suite comprising wash hand basin and WC.



Reception Room

16'2" x 8'3"

Window to rear and side elevations.

Landing

Two storage cupboards, opening to bedroom three and doors to bedrooms one, two and bathroom.

Bedroom One

11'4" x 12'6"

Window to rear elevation and radiator.

Bedroom Two

12'3" x 9'7"

Window to front elevation, storage cupboard and radiator.

Bedroom Three

6'3" x 12'1"

Window to front, fitted wardrobe and radiator.

Bathroom

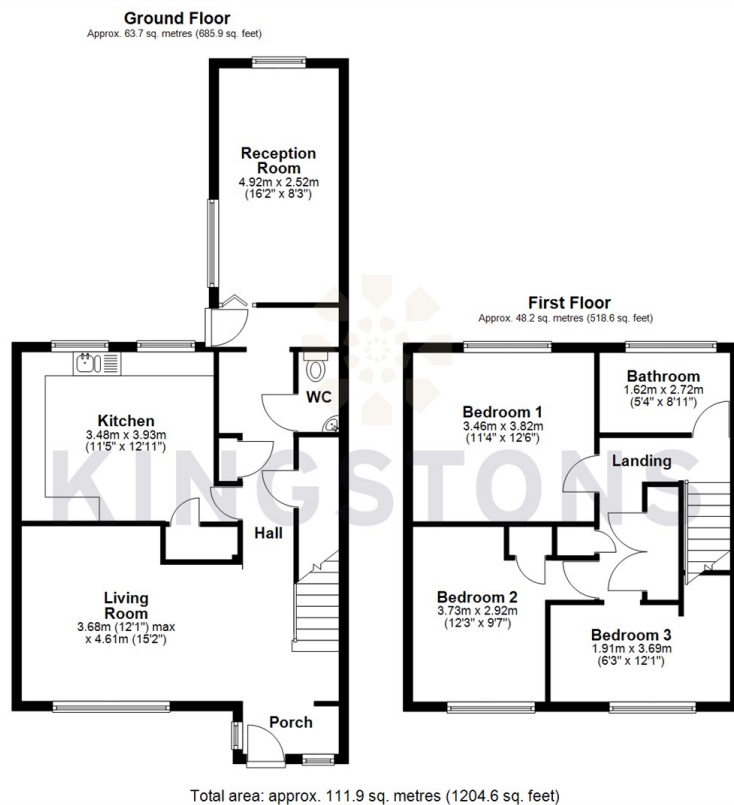
Fitted with three piece suite comprising bath with shower over and curtain rail, wash hand basin and WC, window to rear elevation and radiator.

Outside

Enclosed front and rear gardens with driveway parking for one vehicle.



Local Authority **Wiltshire**
Council Tax Band **B**
EPC Rating



KINGSTONS

Melksham Office

11 High Street, Melksham,
Wiltshire, SN12 6JR

Contact

01225709115
sales@kingstons.biz
www.kingstons.biz

Agents Note: Whilst every care has been taken to prepare these particulars, they are for guidance purposes only. All measurements are approximate and for general guidance purposes only and whilst every care has been taken to ensure accuracy, they should not be relied upon and potential buyers/tenants are advised to recheck the measurements.

